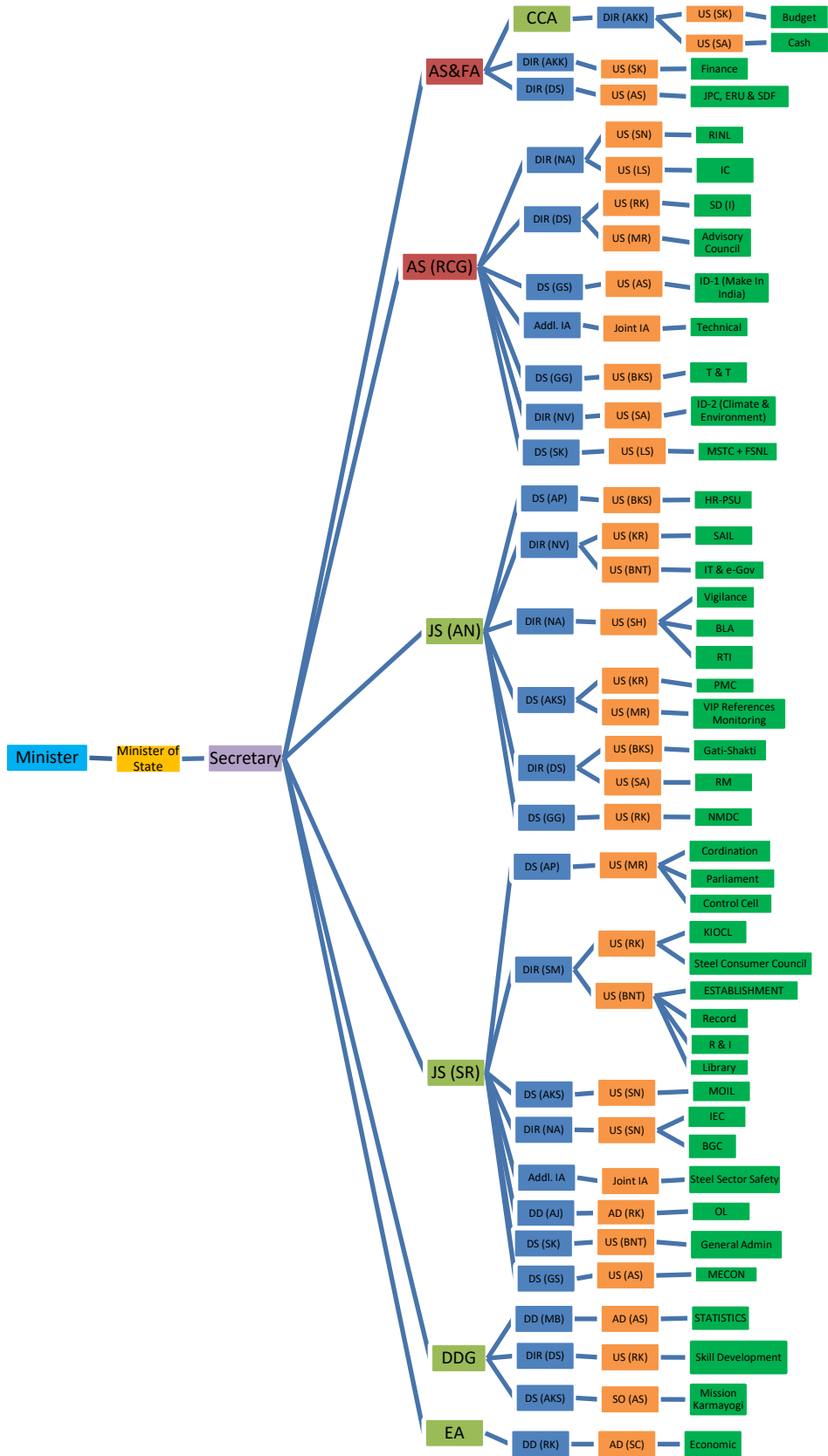


Organisation Chart of Ministry of Steel (as on 6th June, 2023)



AS&FA: Additional Secretary & Financial Adviser
AS: Additional Secretary

JS: Joint Secretary

CCA: Chief Controller of Accounts

EA: Economic Adviser
DDG: Deputy Director General

IA: Industrial Advisor

Dir: Director
DS: Deputy Secretary

DD: Deputy Director
AD: Assistant Director

US: Under Secretary
SO: Section Officer

Directors/DSs/USs reporting to more than one Officers are shown more than once for the sake of clarity